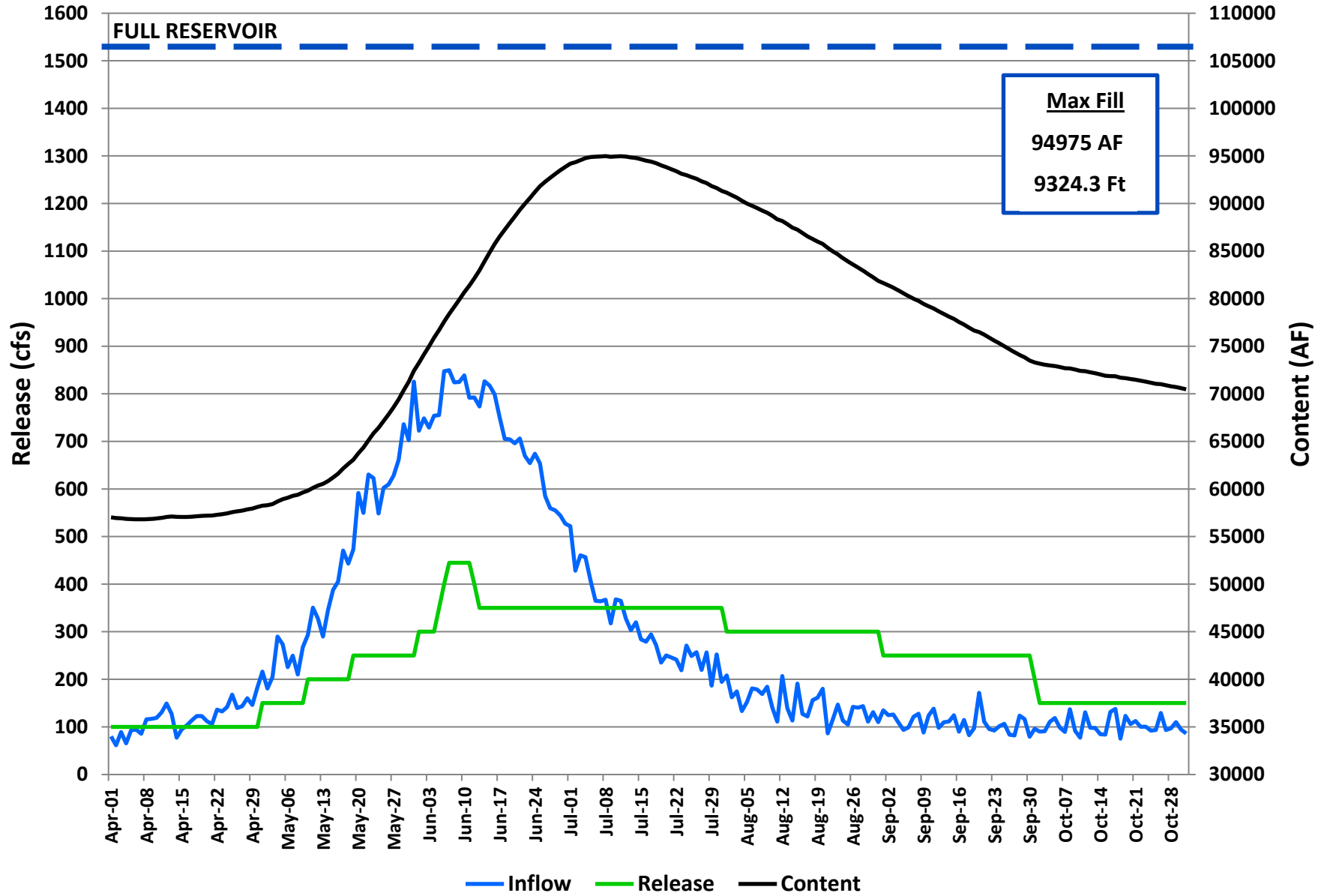


Proposed Operation
Taylor Park Reservoir
Mar 1st forecast = 102% (96,000) af
March 3, 2022

<u>Month</u>	<u>Inflow ac-ft</u>	<u>Average Inflow cfs</u>	<u>Outflow ac-ft</u>	<u>Average Outflow cfs</u>	<u>EOM Content ac-ft</u>	<u>EOM Elevation ft</u>
					58,892	
Nov 1-15	2,320	78	2,230	75	58,982	9302.74
Nov 16-30	2,000	67	2,240	75	58,742	9302.57
Dec 1-15	1,930	65	2,210	74	58,462	9302.38
Dec 16-31	2,590	82	2,350	74	58,702	9302.55
Jan 1-15	2,020	68	2,110	71	58,612	9302.48
Jan 16-31	2,030	64	2,300	72	58,342	9302.30
Feb 1-15	1,690	61	2,030	73	58,002	9302.06
Feb 16-28	1,830	66	2,070	75	57,762	9301.88
Mar 1-15	1,700	57	2,180	73	57,282	9301.54
Mar 16-31	2,100	66	2,320	73	57,062	9301.38
Apr 1-15	2,970	100	2,980	100	57,052	9301.37
Apr 16-30	4,030	135	2,980	100	58,102	9302.13
May 1-15	8,160	274	5,060	170	61,202	9304.29
May 16-31	18,840	594	7,640	241	72,402	9311.56
Jun 1-15	23,590	793	11,160	375	84,832	9318.83
Jun 16-30	19,410	652	10,410	350	93,832	9323.70
Jul 1-15	11,220	377	10,410	350	94,642	9324.12
Jul 16-31	7,780	245	11,110	350	91,312	9322.36
Aug 1-15	4,850	163	8,930	300	87,232	9320.16
Aug 16-31	4,150	131	9,520	300	81,862	9317.16
Sep 1-15	3,430	115	7,440	250	77,852	9314.84
Sep 16-30	3,070	103	7,440	250	73,482	9312.22
Oct 1-15	2,970	100	4,560	153	71,892	9311.25
Oct 16-31	3,330	105	4,760	150	70,462	9310.36

96,000 = April-July inflow
102% of normal
94,975 = Maximum Content

Taylor Park Operations

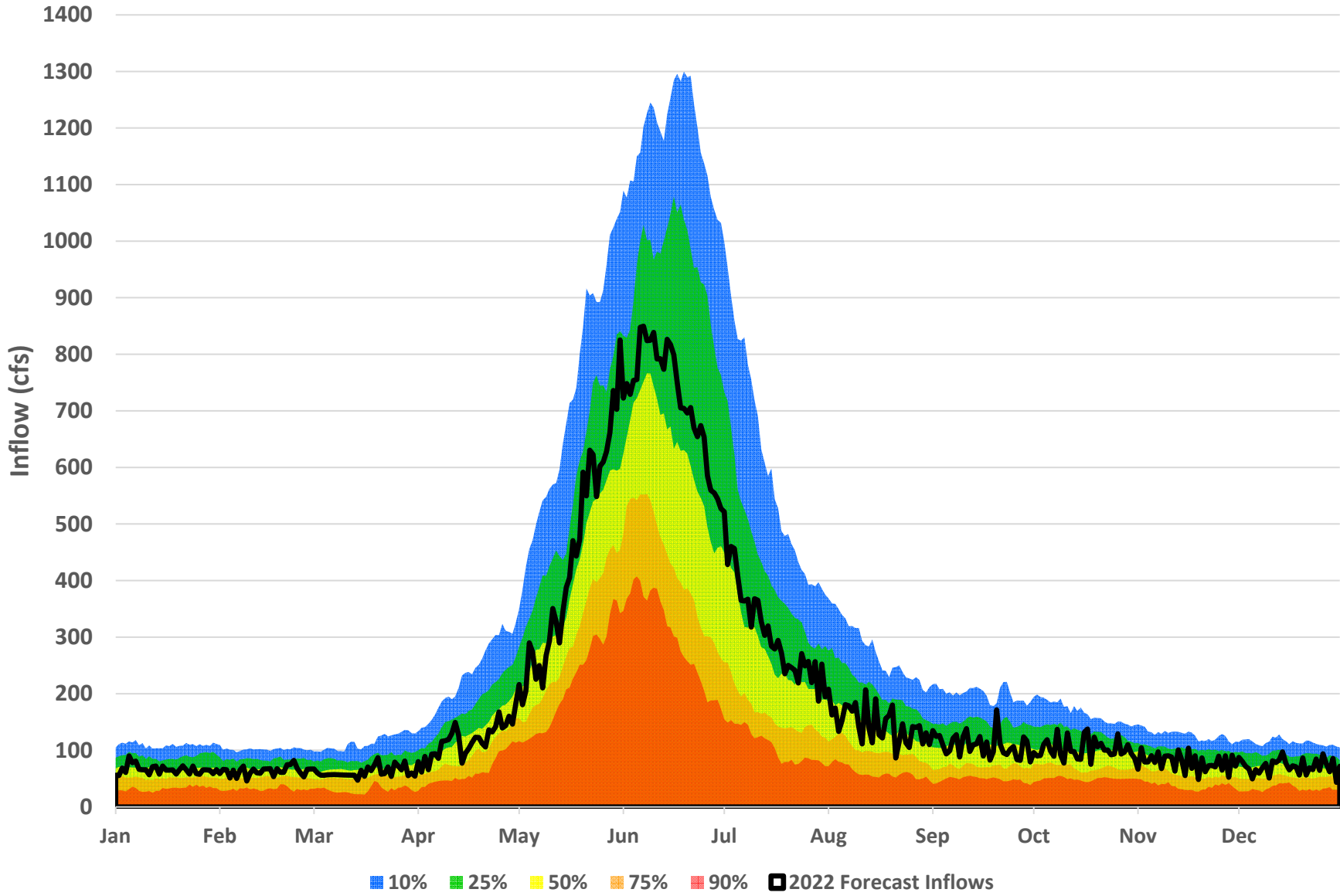


**TAYLOR PARK RESERVOIR - WY2022 - ANNUAL OPERATING PLAN MONTHLY SUMMARY
MOST PROBABLE INFLOW**

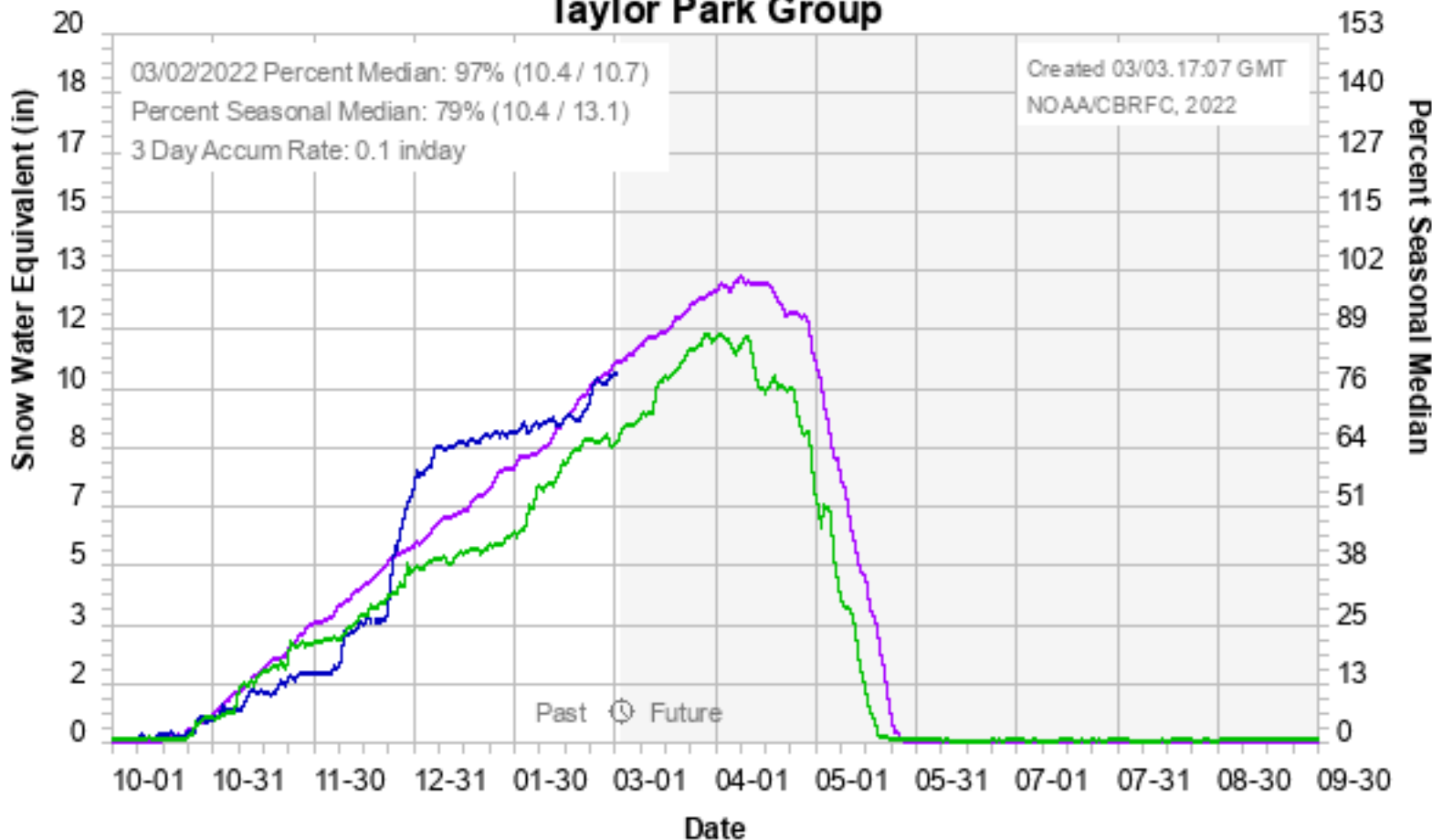
Timestep (Month)	Inflow Volume (Acre-Ft)	% of Average Inflow	Reservoir Release Volume (Acre-Ft)	Average Monthly Reservoir Release (CFS)	% of Average Reservoir Release	End of Month Reservoir Live Storage (Acre-Ft)	% of Average Live Storage	End of Month Reservoir Elevation
OCT 2020	4,390	69%	5,390	88	47%	68,392	99%	9309.05
NOV 2020	4,140	85%	4,940	83	76%	67,453	102%	9308.45
DEC 2020	3,940	87%	5,040	82	92%	66,353	99%	9307.72
JAN 2021	3,740	86%	5,030	82	102%	65,063	98%	9306.88
FEB 2021	3,470	92%	4,830	87	109%	63,703	97%	9305.97
MAR 2021	3,830	87%	5,460	89	84%	62,073	98%	9304.88
APR 2021	6,810	81%	5,260	88	52%	63,623	101%	9305.92
MAY 2021	16,070	60%	9,600	156	68%	70,093	91%	9310.13
JUN 2021	23,630	57%	15,820	266	79%	77,903	76%	9314.87
JUL 2021	10,960	56%	16,450	268	70%	72,413	75%	9311.57
AUG 2021	6,890	70%	15,050	245	79%	64,253	76%	9306.35
SEP 2021	3,880	56%	9,550	160	55%	58,583	82%	9302.46
OCT 2021	4,570	71%	4,620	75	40%	58,892	85%	9302.69
TOTALS	91,930	65%	101,650	140	71%			
Apr-Jul	57,470	60%	47,130		70%			
WY 2022								
NOV 2021	4,320	89%	4,470	75	69%	58,742	89%	9302.57
DEC 2021	4,520	100%	4,560	74	83%	58,702	88%	9302.55
JAN 2022	4,050	93%	4,410	72	90%	58,342	88%	9302.30
FEB 2022	3,520	93%	4,100	74	93%	57,762	88%	9301.88
MAR 2022	3,800	87%	4,500	73	69%	57,062	90%	9301.38
APR 2022	7,000	84%	5,960	100	59%	58,102	92%	9302.13
MAY 2022	27,000	101%	12,700	207	90%	72,402	93%	9311.56
JUN 2022	43,000	105%	21,570	362	108%	93,832	92%	9323.70
JUL 2022	19,000	97%	21,520	350	92%	91,312	94%	9322.36
AUG 2022	9,000	92%	18,450	300	97%	81,862	96%	9317.16
SEP 2022	6,500	93%	14,880	250	86%	73,482	103%	9312.22
OCT 2022	6,300	98%	9,320	152	81%	70,462	102%	9310.36
TOTALS	138,010	98%	126,440	175	88%			
Apr-Jul	96,000	100%	61,750		91%			
WY 2023								
NOV 2022	4,500	93%	5,100	85	78%	69,900	106%	9310.01
DEC 2022	4,100	91%	5,200	85	95%	68,800	103%	9309.31
JAN 2023	4,400	101%	5,200	85	106%	68,000	102%	9308.80
FEB 2023	3,800	100%	4,700	85	106%	67,100	102%	9308.22
MAR 2023	4,400	101%	5,200	85	80%	66,300	104%	9307.69
APR 2023	8,400	100%	10,700	180	106%	64,000	101%	9306.18
MAY 2023	27,000	101%	13,000	211	92%	78,000	101%	9314.93
JUN 2023	42,000	102%	17,500	294	87%	102,500	100%	9328.15
JUL 2023	20,000	102%	23,500	382	101%	99,000	102%	9326.38
AUG 2023	10,000	102%	22,000	358	116%	87,000	102%	9320.03
SEP 2023	7,000	100%	18,000	302	104%	76,000	106%	9313.74
OCT 2023	6,500	102%	12,500	203	109%	70,000	101%	9310.07
NOV 2023	5,000	103%	5,050	85	78%	69,950	106%	9310.04
DEC 2023	4,500	100%	5,250	85	96%	69,200	104%	9309.56
TOTALS	142,100	101%	142,600	197	100%			
Apr-Jul	97,400	101%	64,700		96%			

Taylor Park Inflows

% Exceedence - Historical Inflows



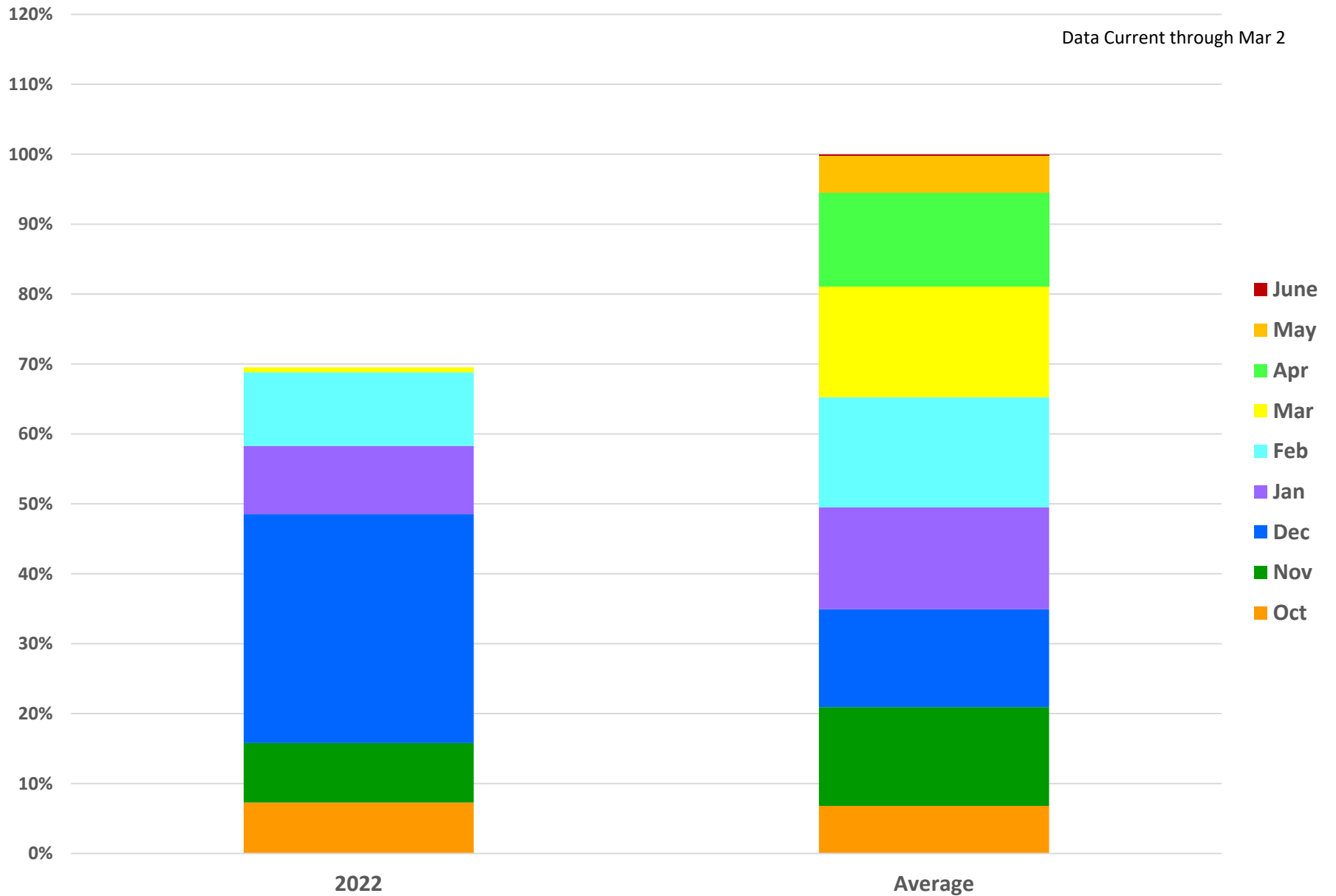
Colorado Basin River Forecast Center Taylor Park Group



Median 1991-2020 2022 2021

Upper Gunnison Basin Snow Accumulation

Data Current through Mar 2



Upper Gunnison Basin Monthly Snow Accumulation			
		Avg Month	
	Month SWE	SWE	% of Avg
Oct	9.9	9.4	105%
Nov	11.6	19.1	61%
Dec	44.5	19.6	227%
Jan	13.3	19.3	69%
Feb	14.3	20.9	69%
Mar	#N/A	22.1	#N/A
Apr	#N/A	18.1	#N/A
May	#N/A	7.3	#N/A
Current Season	94.6	90.6	104%

* monthly numbers are net SWE accumulation for each month

* current season is net SWE accumulation to current date