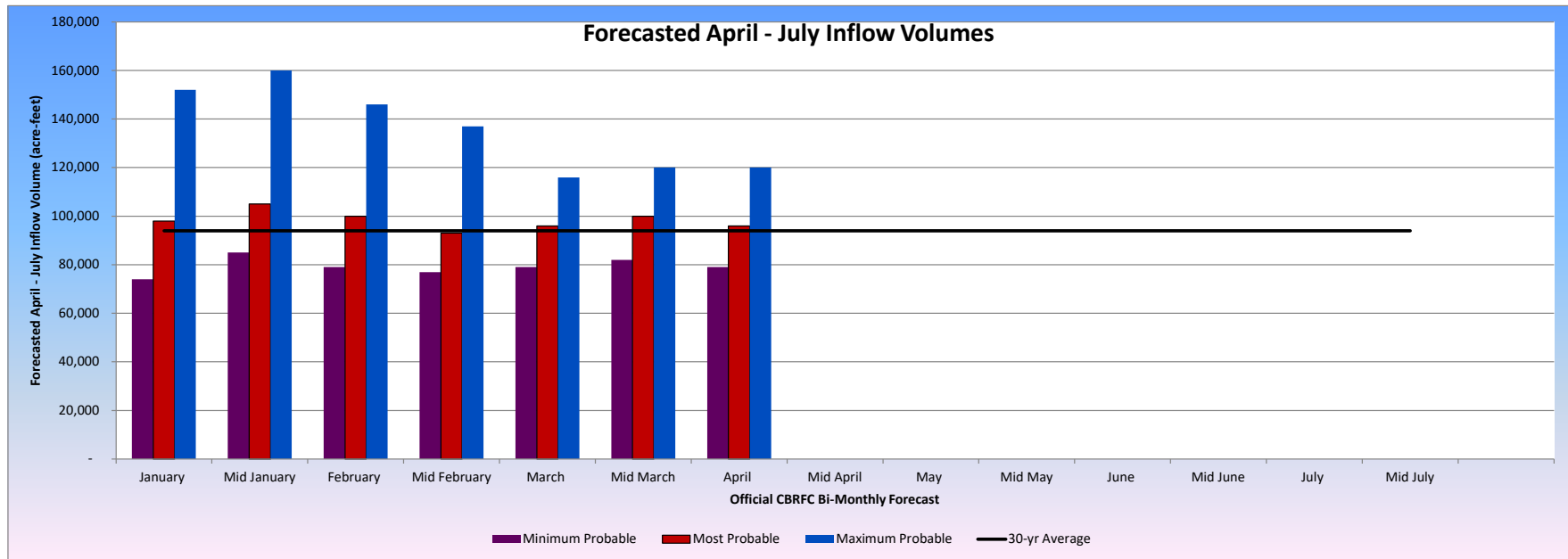


WY2022 CBRFC - Taylor Park Reservoir Most, Max and Min Inflow Forecasts (acre-feet)

CBRFC Forecast Issued	Monthly Inflow Volume Forecast (Acre-Feet)												April - July Forecasts							
	October	November	December	January	February	March	April	May	June	July	August	September								
October	4,500	4,400	3,600																	
Mid October	4,600	4,000	3,600																	
November	4,900	3,900	3,500	3,200																
Mid November	4,900	4,100	3,600	3,300																
December	4,900	4,300	3,600	3,400	2,800															
Mid December	4,900	4,300	3,600	3,400	2,800															
January	4,900	4,300	4,500	3,400	3,100	3,500														
Mid January	4,900	4,300	4,500	4,000	3,100	3,500														
February	4,900	4,300	4,500	4,000	3,200	3,500	7,000													
Mid February	4,900	4,300	4,500	4,000	3,400	3,500	7,000	27,000	42,000	17,000										
March	4,900	4,300	4,500	4,000	3,500	3,800	7,000	28,000	43,000	18,000										
Mid March	4,900	4,300	4,500	4,000	3,500	3,900	7,000	30,000	46,000	17,000										
April	4,900	4,300	4,500	4,000	3,500	4,100	7,500	30,000	42,000	16,500										
Mid April	4,900	4,300	4,500	4,000	3,500	4,100														
May	4,900	4,300	4,500	4,000	3,500	4,100														
Mid May	4,900	4,300	4,500	4,000	3,500	4,100														
June	4,900	4,300	4,500	4,000	3,500	4,100														
Mid June	4,900	4,300	4,500	4,000	3,500	4,100														
July	4,900	4,300	4,500	4,000	3,500	4,100														
Mid July	4,900	4,300	4,500	4,000	3,500	4,100														
August	4,900	4,300	4,500	4,000	3,500	4,100														
Mid August	4,900	4,300	4,500	4,000	3,500	4,100														
September	4,900	4,300	4,500	4,000	3,500	4,100														
Mid September	4,900	4,300	4,500	4,000	3,500	4,100														

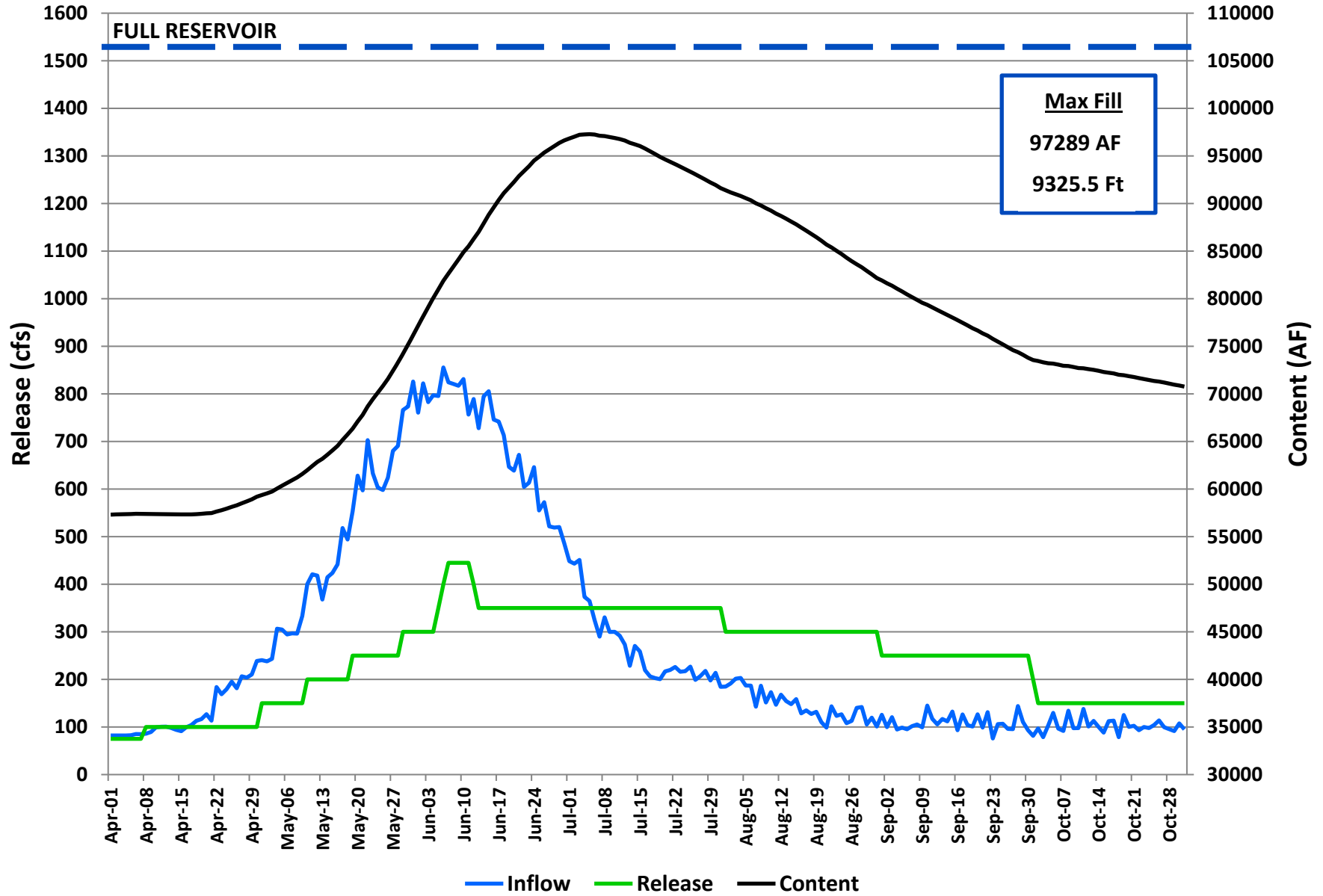


Proposed Operation
Taylor Park Reservoir
Apr 1st forecast = 102% (96,000) af
April 5, 2022

<u>Month</u>	<u>Inflow ac-ft</u>	<u>Average Inflow cfs</u>	<u>Outflow ac-ft</u>	<u>Average Outflow cfs</u>	<u>EOM Content ac-ft</u>	<u>EOM Elevation ft</u>
					58,892	
Nov 1-15	2,320	78	2,230	75	58,982	9302.74
Nov 16-30	2,000	67	2,240	75	58,742	9302.57
Dec 1-15	1,930	65	2,210	74	58,462	9302.38
Dec 16-31	2,590	82	2,350	74	58,702	9302.55
Jan 1-15	2,020	68	2,110	71	58,612	9302.48
Jan 16-31	2,030	64	2,300	72	58,342	9302.30
Feb 1-15	1,690	61	2,030	73	58,002	9302.06
Feb 16-28	1,830	66	2,070	75	57,762	9301.88
Mar 1-15	1,980	67	2,210	74	57,532	9301.71
Mar 16-31	2,150	68	2,380	75	57,302	9301.55
Apr 1-15	2,660	89	2,630	88	57,332	9301.57
Apr 16-30	4,840	163	2,980	100	59,192	9302.89
May 1-15	9,910	333	5,060	170	64,042	9306.21
May 16-31	20,090	633	7,930	250	76,202	9313.86
Jun 1-15	23,760	799	11,160	375	88,802	9321.01
Jun 16-30	18,240	613	10,410	350	96,632	9325.16
Jul 1-15	9,810	330	10,410	350	96,032	9324.85
Jul 16-31	6,690	211	11,110	350	91,612	9322.52
Aug 1-15	5,130	172	8,930	300	87,812	9320.47
Aug 16-31	3,870	122	9,520	300	82,162	9317.33
Sep 1-15	3,310	111	7,440	250	78,032	9314.95
Sep 16-30	3,190	107	7,440	250	73,782	9312.41
Oct 1-15	3,070	103	4,560	153	72,292	9311.49
Oct 16-31	3,230	102	4,760	150	70,762	9310.55

96,000 = April-July inflow
102% of normal
97,289 = Maximum Content

Taylor Park Operations



**TAYLOR PARK RESERVOIR - WY2022 - ANNUAL OPERATING PLAN MONTHLY SUMMARY
MOST PROBABLE INFLOW**

Timestep (Month)	Inflow Volume (Acre-Ft)	% of Average Inflow	Reservoir Release Volume (Acre-Ft)	Average Monthly Reservoir Release (CFS)	% of Average Reservoir Release	End of Month Reservoir Live Storage (Acre-Ft)	% of Average Live Storage	End of Month Reservoir Elevation
OCT 2020	4,390	69%	5,390	88	47%	68,392	99%	9309.05
NOV 2020	4,140	85%	4,940	83	76%	67,453	102%	9308.45
DEC 2020	3,940	87%	5,040	82	92%	66,353	99%	9307.72
JAN 2021	3,740	86%	5,030	82	102%	65,063	98%	9306.88
FEB 2021	3,470	92%	4,830	87	109%	63,703	97%	9305.97
MAR 2021	3,830	87%	5,460	89	84%	62,073	98%	9304.88
APR 2021	6,810	81%	5,260	88	52%	63,623	101%	9305.92
MAY 2021	16,070	60%	9,600	156	68%	70,093	91%	9310.13
JUN 2021	23,630	57%	15,820	266	79%	77,903	76%	9314.87
JUL 2021	10,960	56%	16,450	268	70%	72,413	75%	9311.57
AUG 2021	6,890	70%	15,050	245	79%	64,253	76%	9306.35
SEP 2021	3,880	56%	9,550	160	55%	58,583	82%	9302.46
OCT 2021	4,570	71%	4,620	75	40%	58,892	85%	9302.69
TOTALS	91,930	65%	101,650	140	71%			
Apr-Jul	57,470	60%	47,130		70%			

WY 2022

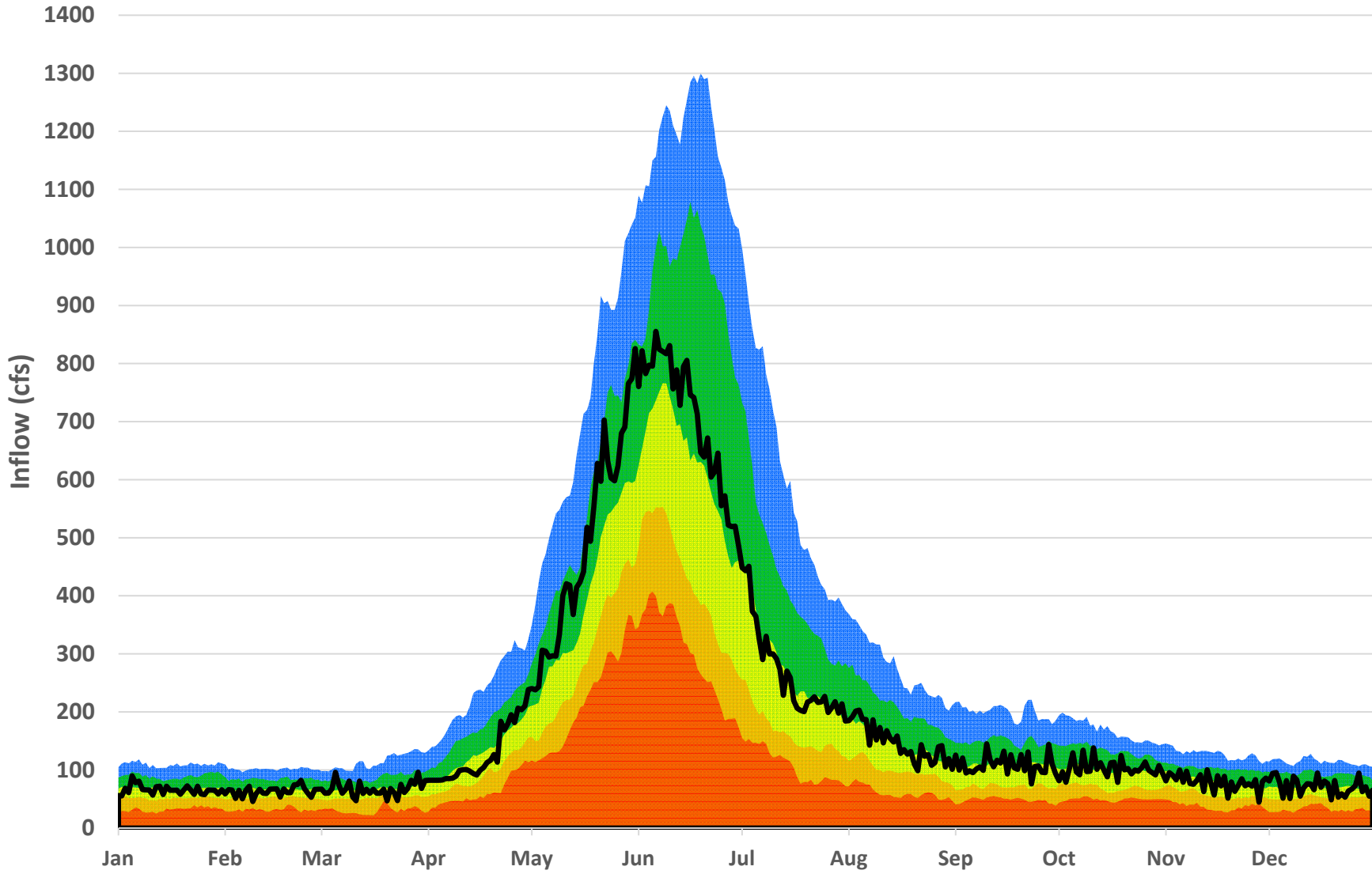
NOV 2021	4,320	89%	4,470	75	69%	58,742	89%	9302.57
DEC 2021	4,520	100%	4,560	74	83%	58,702	88%	9302.55
JAN 2022	4,050	93%	4,410	72	90%	58,342	88%	9302.30
FEB 2022	3,520	93%	4,100	74	93%	57,762	88%	9301.88
MAR 2022	4,130	94%	4,590	75	70%	57,302	90%	9301.55
APR 2022	7,500	90%	5,610	94	56%	59,192	94%	9302.89
MAY 2022	30,000	112%	12,990	211	92%	76,202	98%	9313.86
JUN 2022	42,000	102%	21,570	362	108%	96,632	95%	9325.16
JUL 2022	16,500	84%	21,520	350	92%	91,612	94%	9322.52
AUG 2022	9,000	92%	18,450	300	97%	82,162	97%	9317.33
SEP 2022	6,500	93%	14,880	250	86%	73,782	103%	9312.41
OCT 2022	6,300	98%	9,320	152	81%	70,762	102%	9310.55
TOTALS	138,340	98%	126,470	175	88%			
Apr-Jul	96,000	100%	61,690		91%			

WY 2023

NOV 2022	4,500	93%	5,100	85	78%	70,200	106%	9310.19
DEC 2022	4,100	91%	5,200	85	95%	69,100	104%	9309.50
JAN 2023	4,400	101%	5,200	85	106%	68,300	103%	9308.99
FEB 2023	3,800	100%	4,700	85	106%	67,400	103%	9308.41
MAR 2023	4,400	101%	5,200	85	80%	66,600	105%	9307.88
APR 2023	8,400	100%	11,000	185	109%	64,000	101%	9306.18
MAY 2023	27,000	101%	13,000	211	92%	78,000	101%	9314.93
JUN 2023	42,000	102%	17,500	294	87%	102,500	100%	9328.15
JUL 2023	20,000	102%	23,500	382	101%	99,000	102%	9326.38
AUG 2023	10,000	102%	22,000	358	116%	87,000	102%	9320.03
SEP 2023	7,000	100%	18,000	302	104%	76,000	106%	9313.74
OCT 2023	6,500	102%	12,500	203	109%	70,000	101%	9310.07
NOV 2023	5,000	103%	5,050	85	78%	69,950	106%	9310.04
DEC 2023	4,500	100%	5,250	85	96%	69,200	104%	9309.56
TOTALS	142,100	101%	142,900	197	100%			
Apr-Jul	97,400	101%	65,000		96%			

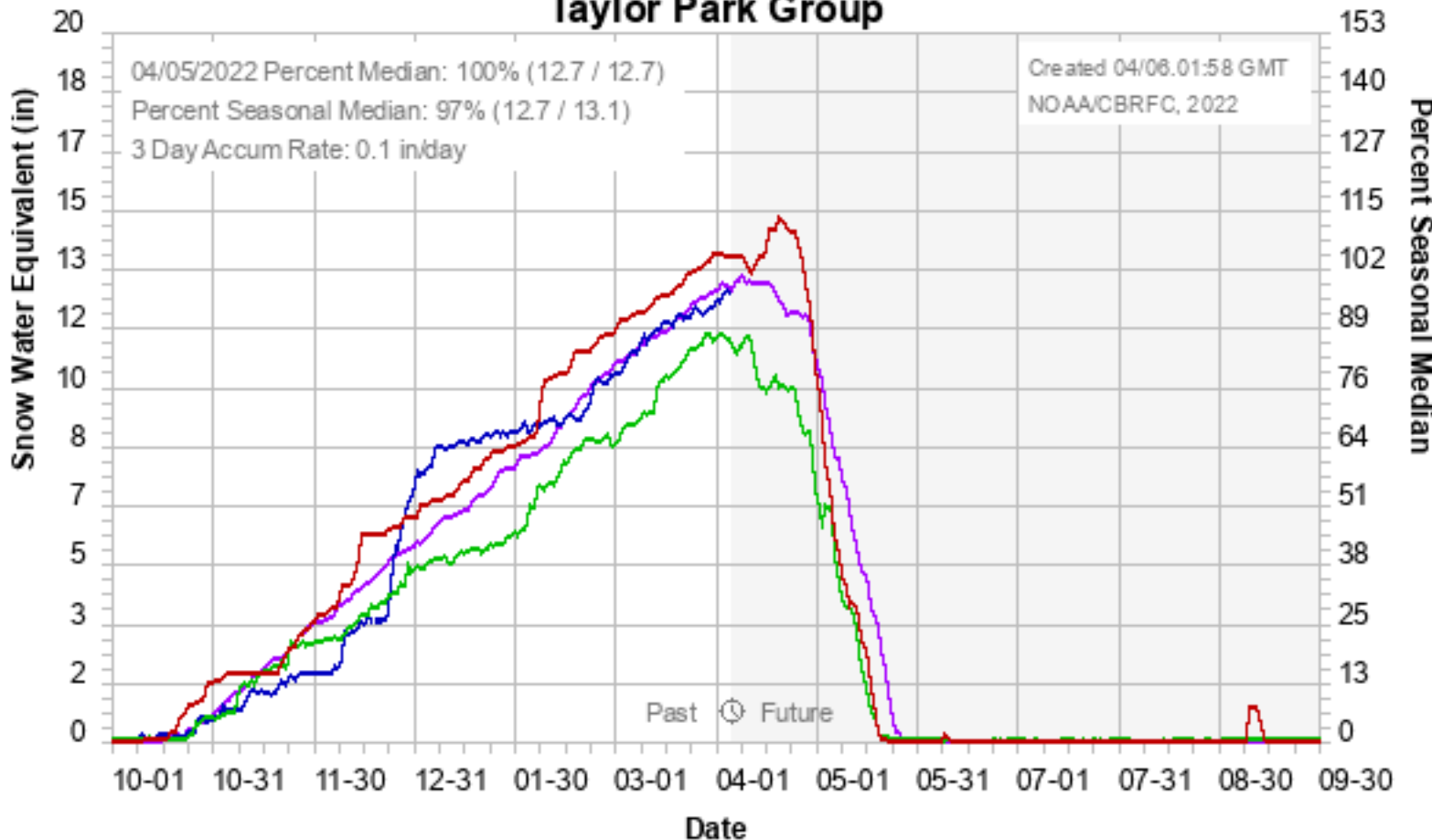
Taylor Park Inflows

% Exceedence - Historical Inflows



■ 10% ■ 25% ■ 50% ■ 75% ■ 90% ■ 2022 Forecast Inflows

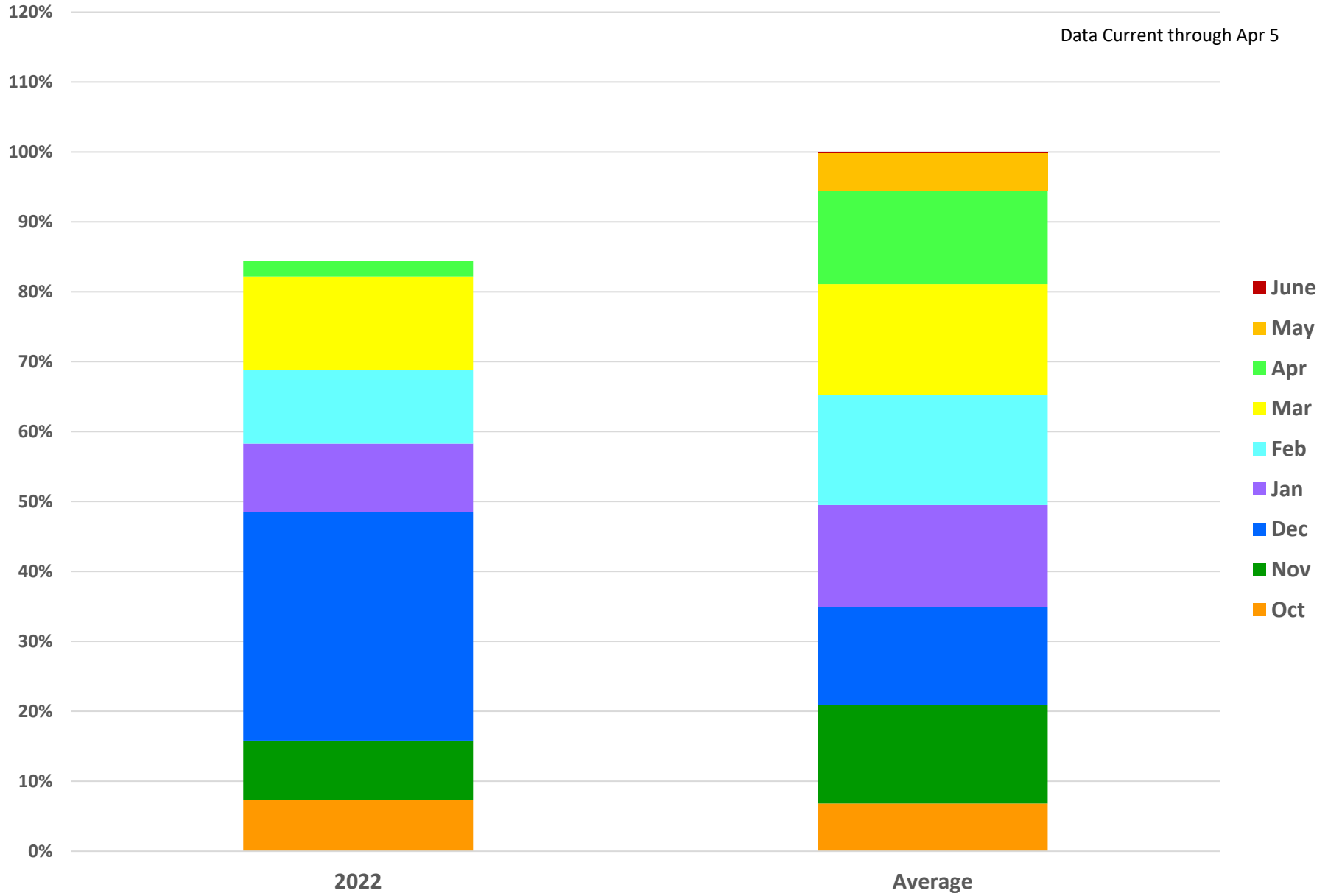
Colorado Basin River Forecast Center Taylor Park Group



Median 1991-2020 2022 2021 2020 2022

Upper Gunnison Basin Snow Accumulation

Data Current through Apr 5



Upper Gunnison Basin Monthly Snow Accumulation			
		Avg Month	
	Month SWE	SWE	% of Avg
Oct	9.9	9.4	105%
Nov	11.6	19.1	61%
Dec	44.5	19.6	227%
Jan	13.3	19.3	69%
Feb	14.3	20.9	69%
Mar	18.2	22.1	82%
Apr	#N/A	18.1	#N/A
May	#N/A	7.3	#N/A
Current Season	114.9	114.1	101%

* monthly numbers are net SWE accumulation for each month

* current season is net SWE accumulation to current date