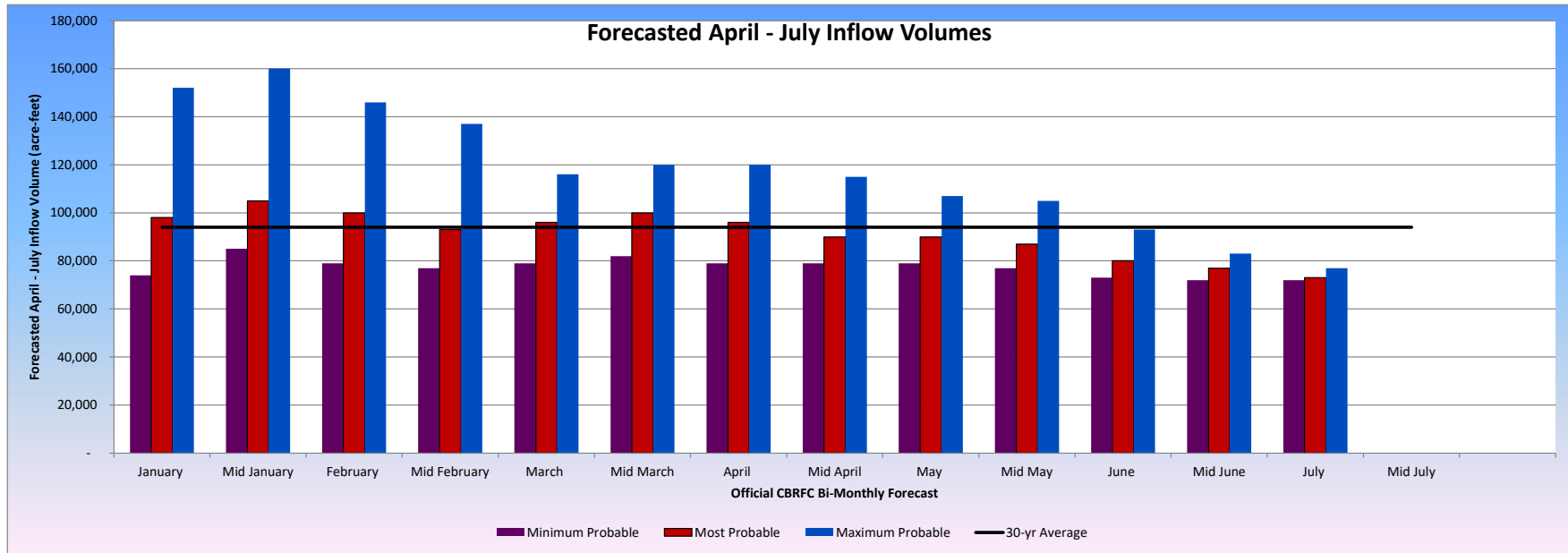
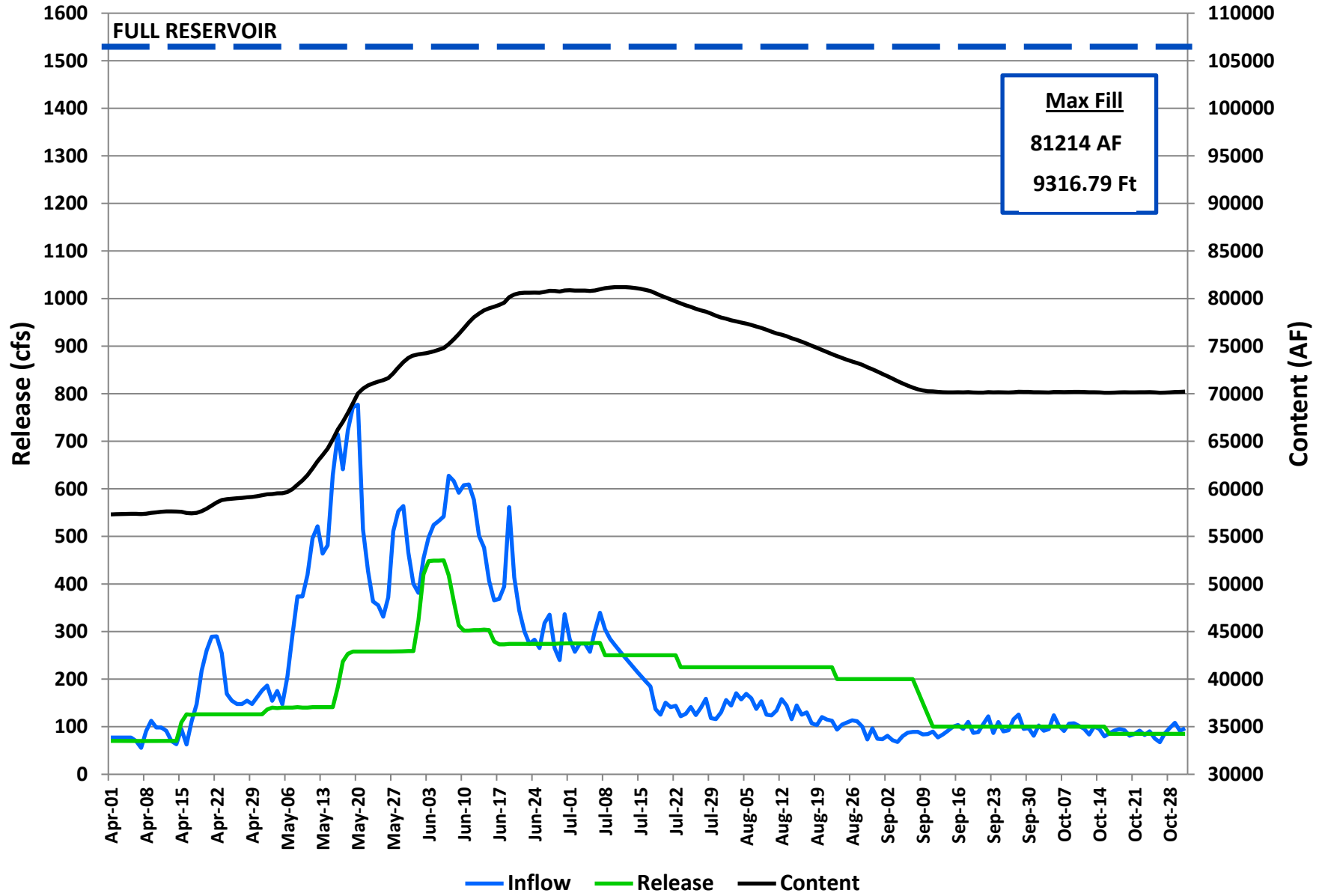


WY2022 CBRFC - Taylor Park Reservoir Most, Max and Min Inflow Forecasts (acre-feet)

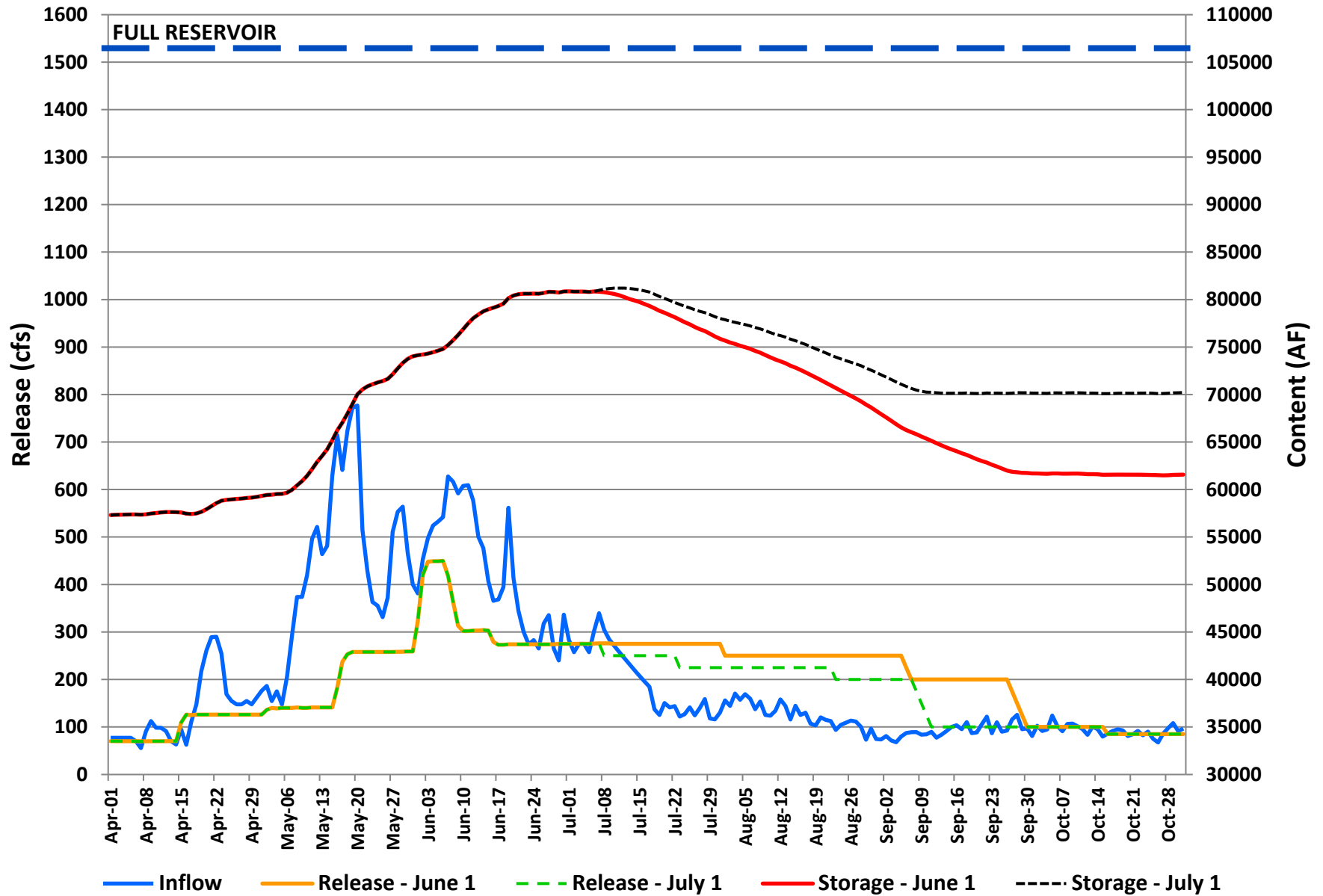
CBRFC Forecast Issued	Monthly Inflow Volume Forecast (Acre-Feet)												April - July Forecasts					
	October	November	December	January	February	March	April	May	June	July	August	September						
October	4,500	4,400	3,600															
Mid October	4,600	4,000	3,600															
November	4,900	3,900	3,500	3,200														
Mid November	4,900	4,100	3,600	3,300														
December	4,900	4,300	3,600	3,400	2,800													
Mid December	4,900	4,300	3,600	3,400	2,800													
January	4,900	4,300	4,500	3,400	3,100	3,500												
Mid January	4,900	4,300	4,500	4,000	3,100	3,500												
February	4,900	4,300	4,500	4,000	3,200	3,500	7,000											
Mid February	4,900	4,300	4,500	4,000	3,400	3,500	7,000	27,000	42,000	17,000								
March	4,900	4,300	4,500	4,000	3,500	3,800	7,000	28,000	43,000	18,000								
Mid March	4,900	4,300	4,500	4,000	3,500	3,900	7,000	30,000	46,000	17,000								
April	4,900	4,300	4,500	4,000	3,500	4,100	7,500	30,000	42,000	16,500								
Mid April	4,900	4,300	4,500	4,000	3,500	4,100	7,200	25,000	41,000	16,800								
May	4,900	4,300	4,500	4,000	3,500	4,100	7,900	27,000	40,000	15,100								
Mid May	4,900	4,300	4,500	4,000	3,500	4,100	7,900	32,000	34,000	13,000								
June	4,900	4,300	4,500	4,000	3,500	4,100	7,900	27,000	33,000	12,200								
Mid June	4,900	4,300	4,500	4,000	3,500	4,100	7,900	27,000	31,000	11,200	8,000							
July	4,900	4,300	4,500	4,000	3,500	4,100	7,900	27,000	25,800	12,200	7,500	5,500						
Mid July	4,900	4,300	4,500	4,000	3,500	4,100	7,900	27,000	25,800									
August	4,900	4,300	4,500	4,000	3,500	4,100	7,900	27,000	25,800									
Mid August	4,900	4,300	4,500	4,000	3,500	4,100	7,900	27,000	25,800									
September	4,900	4,300	4,500	4,000	3,500	4,100	7,900	27,000	25,800									
Mid September	4,900	4,300	4,500	4,000	3,500	4,100	7,900	27,000	25,800									



Taylor Park Operations



Taylor Park Operations



Proposed Operation
Taylor Park Reservoir
July 1st forecast = 78% (73,000) af
July 7, 2022

<u>Month</u>	<u>Inflow ac-ft</u>	<u>Average Inflow cfs</u>	<u>Outflow ac-ft</u>	<u>Average Outflow cfs</u>	<u>EOM Content ac-ft</u>	<u>EOM Elevation ft</u>
					58,892	
Nov 1-15	2,320	78	2,230	75	58,982	9302.74
Nov 16-30	2,000	67	2,240	75	58,742	9302.57
Dec 1-15	1,930	65	2,210	74	58,462	9302.38
Dec 16-31	2,590	82	2,350	74	58,702	9302.55
Jan 1-15	1,920	65	2,020	68	58,602	9302.48
Jan 16-31	1,930	61	2,200	69	58,332	9302.29
Feb 1-15	1,600	58	1,940	70	57,992	9302.05
Feb 16-28	1,700	61	1,940	70	57,752	9301.87
Mar 1-15	1,830	62	2,050	69	57,532	9301.71
Mar 16-31	1,990	63	2,210	70	57,312	9301.56
Apr 1-15	2,440	82	2,160	73	57,592	9301.76
Apr 16-30	5,390	181	3,750	126	59,232	9302.91
May 1-15	10,110	340	4,140	139	65,202	9306.97
May 16-31	16,830	530	7,990	252	74,042	9312.56
Jun 1-15	15,760	530	10,810	363	78,992	9315.51
Jun 16-30	10,050	338	8,160	274	80,882	9316.60
Jul 1-15	7,960	268	7,790	262	81,052	9316.70
Jul 16-31	4,470	141	7,490	236	78,032	9314.95
Aug 1-15	4,350	146	6,690	225	75,692	9313.56
Aug 16-31	3,350	106	6,690	211	72,352	9311.53
Sep 1-15	2,480	83	4,660	157	70,172	9310.18
Sep 16-30	3,020	102	2,980	100	70,212	9310.20
Oct 1-15	2,890	97	2,980	100	70,122	9310.15
Oct 16-31	2,810	89	2,700	85	70,232	9310.21

73,010 = April-July inflow
78% of normal
81,214 = Maximum Content

preliminary

RELEASE CHANGES

	<u>June 1</u>	<u>1-Jul</u>
Apr-16	125	125
May-01	140	140
May-16	200	200
May-17	250	250
Jun-01	350	350
Jun-02	445	445
Jun-07	400	400
Jun-08	350	350
Jun-09	300	300
Jun-16	275	275
Jul-01	275	275
Jul-08		250
Jul-16	275	250
Jul-23		225
Aug-01	250	225
Aug-16	250	225
Aug-23		200
Sep-01	250	200
Sep-06	225	200
Sep-07	200	200
Sep-08		175
Sep-09		150
Sep-10		125
Sep-11		100
Sep-16	200	100
Sep-27	175	
Sep-28	150	
Sep-29	125	
Sep-30	100	
Oct-01		
Oct-02		
Oct-03		
Oct-04		
Oct-16	85	85
Nov-01	85	85

Max Fill 85,850 80,950

Oct-31 70,000 70,400

**TAYLOR PARK RESERVOIR - WY2022 - ANNUAL OPERATING PLAN MONTHLY SUMMARY
MOST PROBABLE INFLOW**

Timestep (Month)	Inflow Volume (Acre-Ft)	% of Average Inflow	Reservoir Release Volume (Acre-Ft)	Average Monthly Reservoir Release (CFS)	% of Average Reservoir Release	End of Month Reservoir Live Storage (Acre-Ft)	% of Average Live Storage	End of Month Reservoir Elevation
OCT 2020	4,390	69%	5,390	88	47%	68,392	99%	9309.05
NOV 2020	4,140	85%	4,940	83	76%	67,453	102%	9308.45
DEC 2020	3,940	87%	5,040	82	92%	66,353	99%	9307.72
JAN 2021	3,740	86%	5,030	82	102%	65,063	98%	9306.88
FEB 2021	3,470	92%	4,830	87	109%	63,703	97%	9305.97
MAR 2021	3,830	87%	5,460	89	84%	62,073	98%	9304.88
APR 2021	6,810	81%	5,260	88	52%	63,623	101%	9305.92
MAY 2021	16,070	60%	9,600	156	68%	70,093	91%	9310.13
JUN 2021	23,630	57%	15,820	266	79%	77,903	76%	9314.87
JUL 2021	10,960	56%	16,450	268	70%	72,413	75%	9311.57
AUG 2021	6,890	70%	15,050	245	79%	64,253	76%	9306.35
SEP 2021	3,880	56%	9,550	160	55%	58,583	82%	9302.46
OCT 2021	4,570	71%	4,620	75	40%	58,892	85%	9302.69
TOTALS	91,930	65%	101,650	140	71%			
Apr-Jul	57,470	60%	47,130		70%			
WY 2022								
NOV 2021	4,320	89%	4,470	75	69%	58,742	89%	9302.57
DEC 2021	4,520	100%	4,560	74	83%	58,702	88%	9302.55
JAN 2022	3,850	89%	4,220	69	86%	58,332	88%	9302.29
FEB 2022	3,300	87%	3,880	70	88%	57,752	88%	9301.87
MAR 2022	3,820	87%	4,260	69	65%	57,312	90%	9301.56
APR 2022	7,830	93%	5,910	99	59%	59,232	94%	9302.91
MAY 2022	26,940	100%	12,130	197	86%	74,042	96%	9312.56
JUN 2022	25,810	63%	18,970	319	95%	80,882	79%	9316.60
JUL 2022	12,430	63%	15,280	249	65%	78,032	80%	9314.95
AUG 2022	7,700	78%	13,380	218	70%	72,352	85%	9311.53
SEP 2022	5,500	79%	7,640	128	44%	70,212	98%	9310.20
OCT 2022	5,700	89%	5,680	92	50%	70,232	102%	9310.21
TOTALS	111,720	79%	100,380	139	70%			
Apr-Jul	73,010	76%	52,290		77%			
WY 2023								
NOV 2022	4,500	93%	5,100	85	78%	69,600	105%	9309.82
DEC 2022	4,100	91%	5,200	85	95%	68,500	103%	9309.12
JAN 2023	4,400	101%	5,200	85	106%	67,700	102%	9308.61
FEB 2023	3,800	100%	4,700	85	106%	66,800	102%	9308.03
MAR 2023	4,400	101%	5,200	85	80%	66,000	104%	9307.50
APR 2023	8,400	100%	10,400	175	103%	64,000	101%	9306.18
MAY 2023	27,000	101%	13,000	211	92%	78,000	101%	9314.93
JUN 2023	42,000	102%	17,500	294	87%	102,500	100%	9328.15
JUL 2023	20,000	102%	23,500	382	101%	99,000	102%	9326.38
AUG 2023	10,000	102%	22,000	358	116%	87,000	102%	9320.03
SEP 2023	7,000	100%	18,000	302	104%	76,000	106%	9313.74
OCT 2023	6,500	102%	12,500	203	109%	70,000	101%	9310.07
NOV 2023	5,000	103%	5,050	85	78%	69,950	106%	9310.04
DEC 2023	4,500	100%	5,250	85	96%	69,200	104%	9309.56
TOTALS	142,100	101%	142,300	197	99%			
Apr-Jul	97,400	101%	64,400		95%			

Taylor Park Inflows

% Exceedence - Historical Inflows

