

# *Colorado Division of Water Resources & Water Administration in Colorado*



**Bob W. Hurford, P.E.**  
**Division Engineer**  
**Water Division 4**



# Department of Natural Resources Agencies

- **Water Resources**
- Parks & Wildlife
- Energy
- Colorado Avalanche Information Center
- Water Conservation Board
- Reclamation, Mining, and Safety
- State Land Board
- Forestry

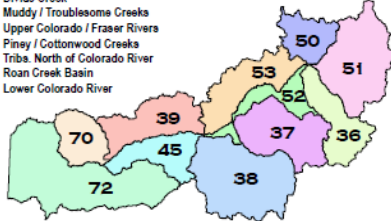
# DWR's Divisions and Water Districts

## COLORADO BASINS

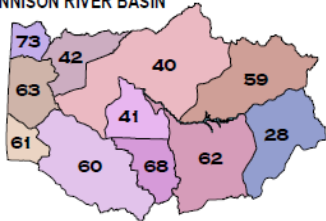
District District Name

36	Blue River Basin
37	Eagle River Basin
38	Roaring Fork River Basin
39	Rifle / Elk / Parachute Creeks
45	Divide Creek
50	Muddy / Troublesome Creeks
51	Upper Colorado / Fraser Rivers
52	Piney / Cottonwood Creeks
53	Trib. North of Colorado River
70	Roan Creek Basin
72	Lower Colorado River

### COLORADO RIVER BASIN



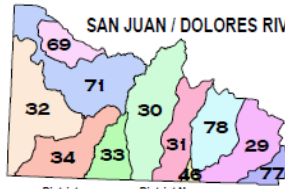
### GUNNISON RIVER BASIN



District District Name

28	Tomichi Creek
40	North Fork / Triba.
41	Lower Uncompahgre River
42	Lower Gunnison River
59	East River Basin
60	San Miguel River Basin
61	Paradox Creek
62	Upper Gunnison River
63	Dolores River Basin
68	Upper Uncompahgre River
73	Little Dolores River

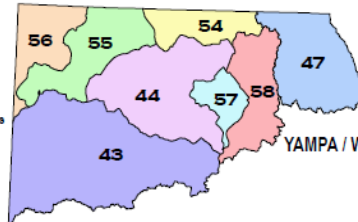
### SAN JUAN / DOLORES RIVER BASIN



District District Name

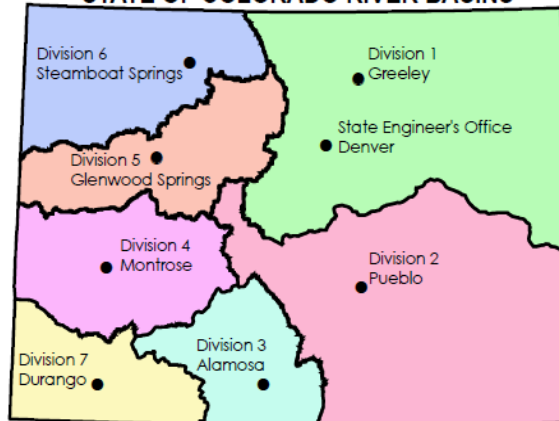
29	San Juan River Basin
30	Animas River Basin
31	Los Pinos River Basin
32	McElmo Creek Basin
33	La Plata River Basin
34	Mancos River Basin
46	Navajo Reservoir
69	Disappointment Creek Basin
71	West Dolores Creek / Triba.
77	Navajo River Basin
78	Piedra River Basin

District	District Name
43	White River Basin
44	Lower Yampa River
47	North Platte River Basin
54	Stater / Timberlake Creeks
55	Little Snake River
56	Green River Basin
57	Middle Yampa River
58	Upper Yampa River



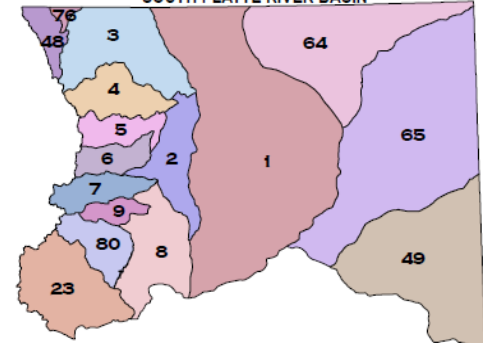
### YAMPA / WHITE RIVER BASIN

## STATE OF COLORADO RIVER BASINS



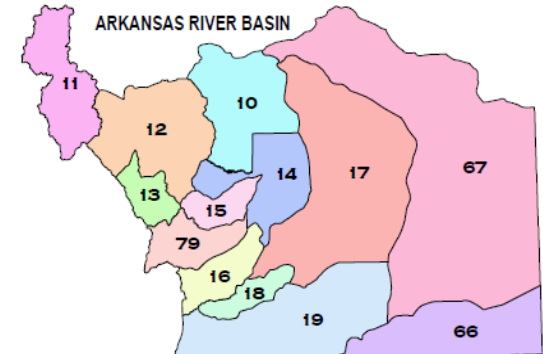
Colorado Map scale: 1:5,000,000  
Individual District scale: 1:3,500,000

### SOUTH PLATTE RIVER BASIN

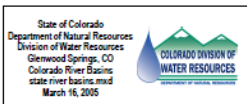


District	District Name	District	District Name
1	South Platte: Greeley to Balzac	9	Bear Creek
2	South Platte: Denver Gage to Greeley	23	Upper South Platte
3	Cache La Poudre River	48	Laramie River
4	Big Thompson River	49	Republican River
5	St. Vrain Creek	64	South Platte: Balzac to Stataline
6	Boulder Creek	65	Arikaree River
7	Clear Creek	76	Sand Creek
8	South Platte: Cheeseman to Denver Gage	80	North Fork of South Platte

### ARKANSAS RIVER BASIN



District	District Name	District	District Name
10	Fountain Creek	17	Arkansas: Fowler to Las Animas
11	Arkansas: Headwaters to Salida	18	Apishapa River
12	Arkansas: Salida to Portland	19	Purgatoire River
13	Wet Mountain Valley	66	Cimarron River Basin
14	Arkansas: Portland to Fowler	67	Arkansas: Las Animas to Stataline
15	Saint Charles	79	Huerfano River
16	Cucharas River		



District District Name

20	Rio Grande
21	Alamosa La Jara
22	Conchos River
24	Culebra Creek
25	San Luis Creek
26	Saguache Creek
27	Camero Creek
35	Trinchera Creek

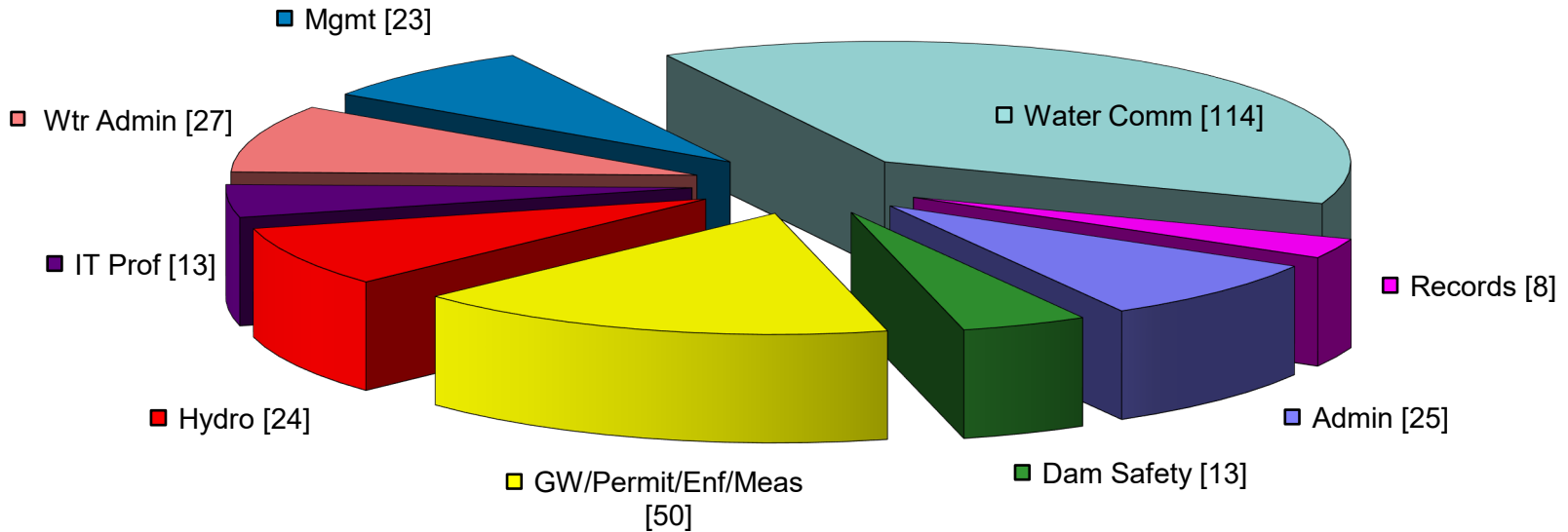
# Division of Water Resources Responsibilities

- Water Administration
- Dam Safety
- Ground Water Permitting
- Interstate Compacts
- Hydrographic Program
- Public Information Services
- Additional Program Activities
  - Such as Working with Water Courts



# DWR Responsibilities and Job Categories

Total no. of employees: 297



- Administrative / Accounting / Program Support
- Dam Safety - Prof. Eng.
- GW / Permitting / Enforcement / Measurement
- Hydrographer - Prof. Eng, EIT, EPST
- IT Professional
- Water Admin / Water Supply - Prof Engr / Engr-In-Trng / PSRS
- Management - Prof Engr / PSRS
- Water Commissioner - EPST / EPSA
- Records Technician

# Water Deliveries in Colorado

Ditches are important to Colorado. They permit a landscape, economy, and history in which fertile valleys prosper. Without them, properties adjacent to or distant from watercourses wither.

*(Roaring Fork Club v. St. Jude's Co.*  
36 P.3d 1229 (Colo. Sup. Ct.))

- Agriculture 86%
- Municipal/Domestic 7%
- Recreation/Fisheries 3%
- Industrial/Commercial 2%
- Augmentation 1%
- Recharge 1%





# Water Administration





Ditches are important to Colorado. They permit a landscape, economy, and history in which fertile valleys prosper. Without them, properties adjacent to or distant from watercourses wither.

*(Roaring Fork Club v. St. Jude's Co. 36 P.3d 1229 (Colo. Sup. Ct.))*



**In 1879, Colorado established Water Commissioners to distribute water rights in priority based upon principle of *“First In Time...First In Right”***

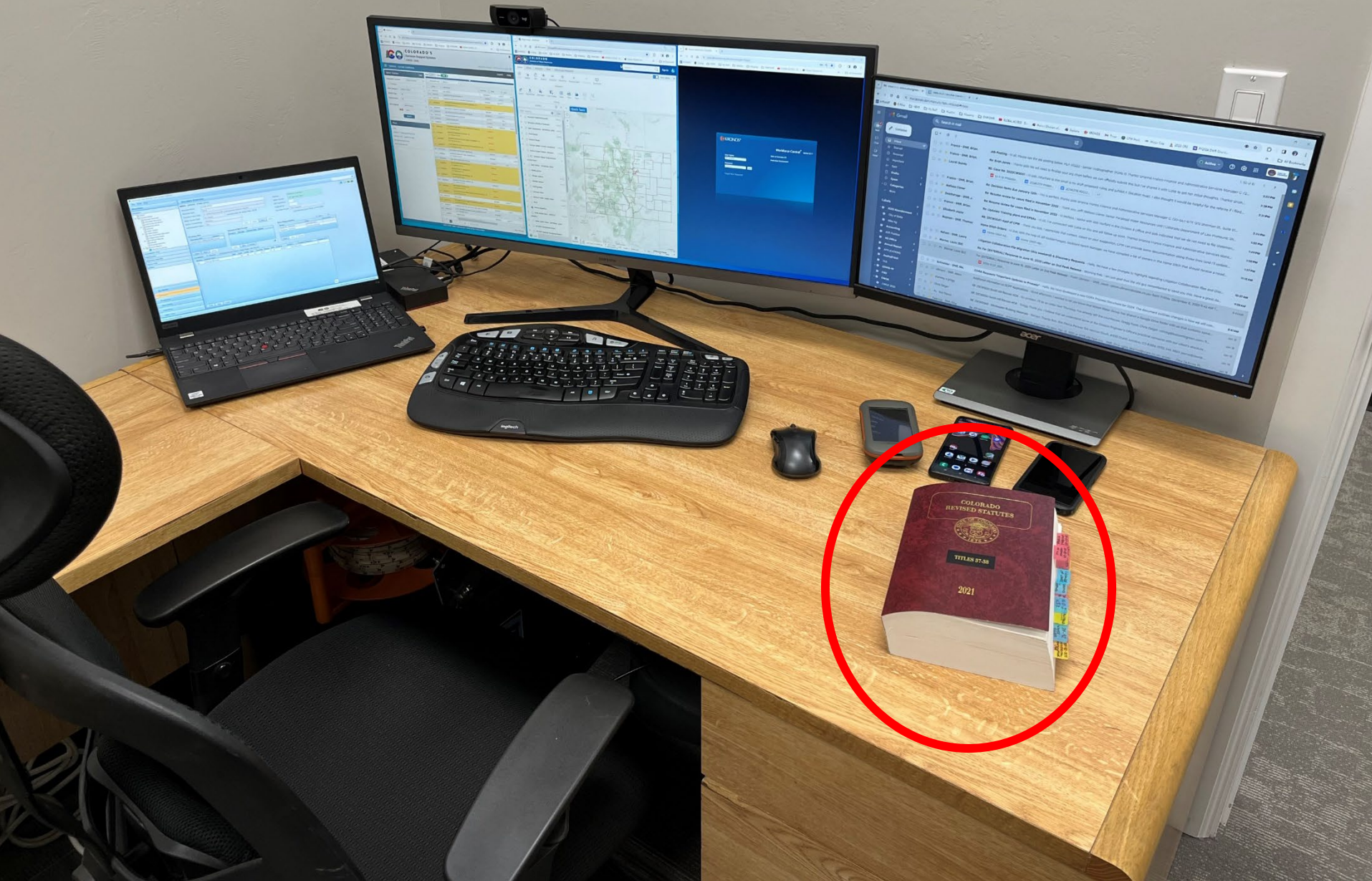


# Key Statutes DWR Operates Under

- Title 37, Article 92 Water Rights Determination and Administration (Water Courts, Water Right Decree Process, Substitute Water Supply Plans, Tabulation, Administration, Exempt Well Permitting)
- Title 37, Article 90 Well Permitting (inside and outside designated basins and for the Denver basin)
- Title 37, Article 80 State Engineer Authority and Responsibilities
- Title 37, Article 84 Responsibility of User of Water for Maintenance of Diversion Structures, Ditches and Measuring Flumes
- Title 37, Article 87 Review of Plans and Specifications for Reservoir and Determination of Safe Storage Levels



# The Modern Water Commissioner's Desk



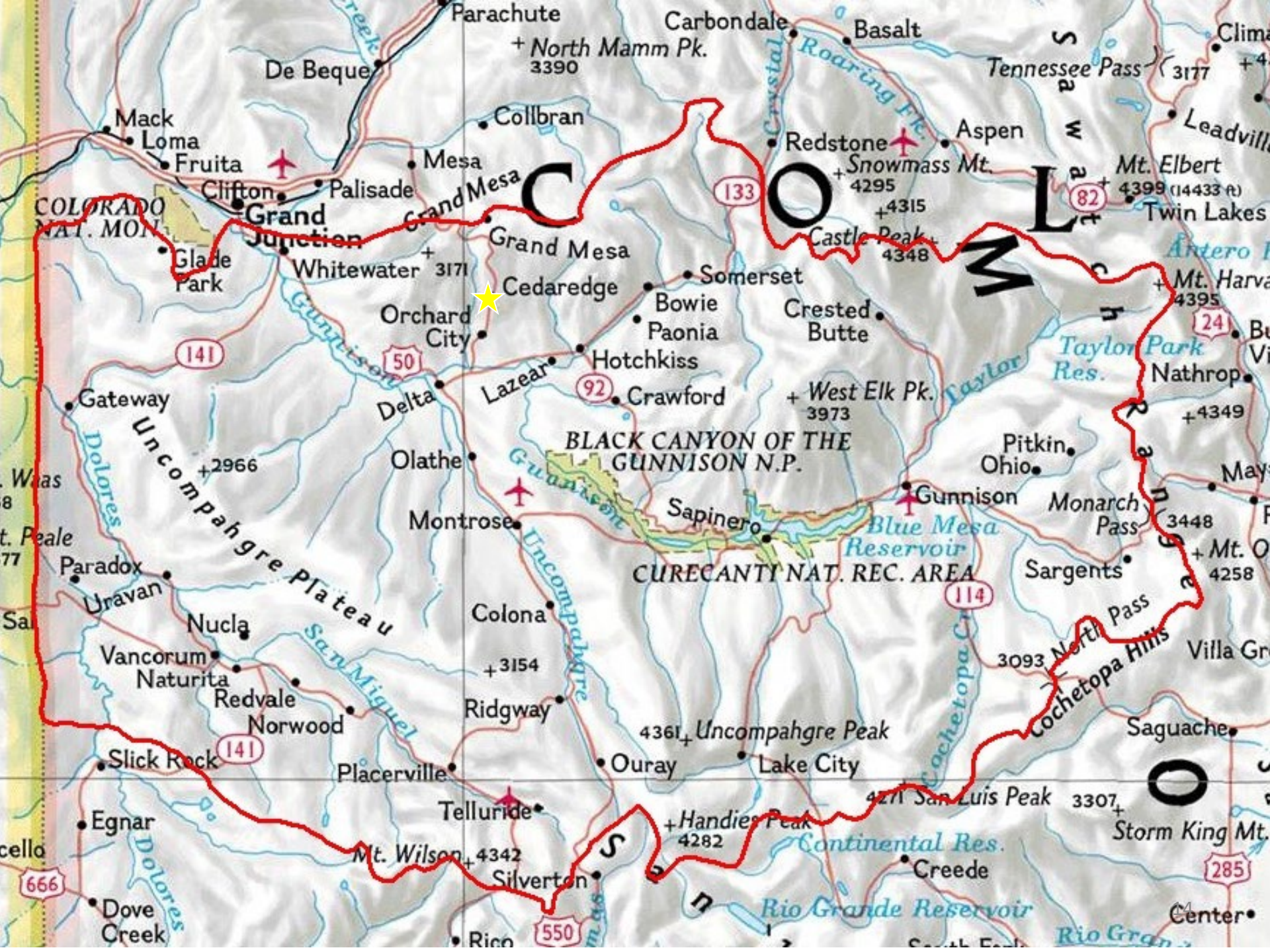
# Water Commissioner Responsibilities

- Day to Day Administration
  - Setting the Call on the Stream Based on Supply and Demand
  - Assuring Diversions in Priority for Decreed Uses without Waste
  - Assuring Diversions Are Measured
  - Delivery of Augmentation and Other Water After Assessing Transit Losses
  - Operating Exchanges
  - Assuring Other Decree Conditions in Augmentation and Change Cases Are Complied With
- Review of Accounting and Maintenance of Diversion Records

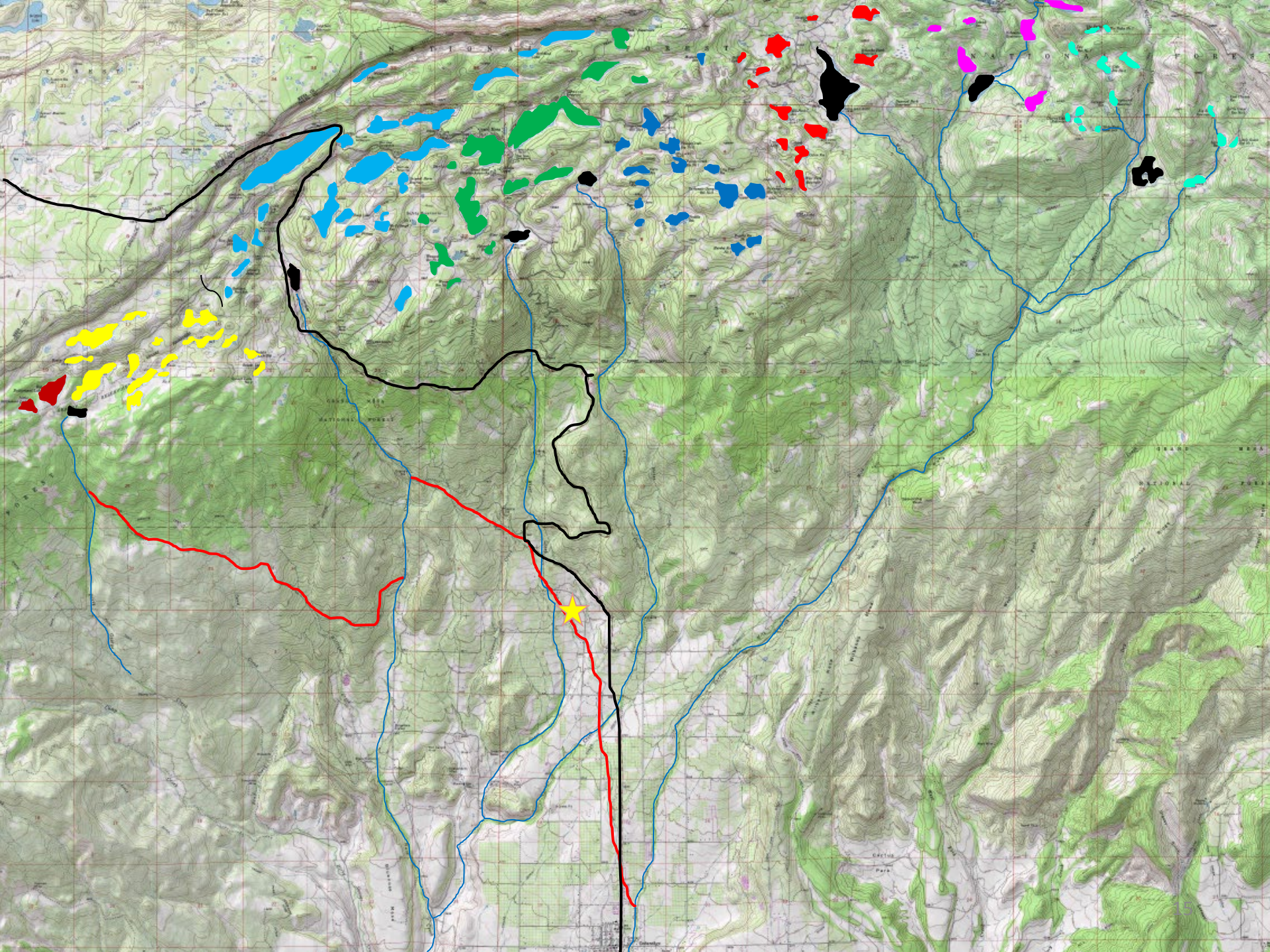
# Statutory Provisions Commonly Used for Water Administration

- C.R.S. 37-92-501 General Jurisdiction to Administer Water
- C.R.S. 37-92-502 Daily Administration
  - (2) order total or partial discontinuance of use to extent water not necessary for beneficial use or needed by senior user (see also C.R.S. 37-84-116 – control of headgates)
  - (2) won't order discontinuance unless makes water available at the place of seniors need.
  - (2) Stop discontinuance if water does not become available to senior priorities in time and place of need
  - (5)(a) Authority to order installation of measuring devices (also C.R.S. 37-84-112, 37-84-114 – SEO rates flumes)
  - (6) staff may enter property (public or private)
- C.R.S. 37-84-117 (5) release of water to account for evaporation from on-stream reservoirs
- C.R.S. 37-80-120 Exchanges (several other references)















## SPILLWAY FROM WARD LAKE







WEIR BELOW WARD LAKE







## WARD CREEK DRAINAGE















KISER CREEK











# DON'T REMOVE THIS NOTICE

Bilco

Person

Ditch  
Sec. Ft.

6/21/2010  
Off/ On

RES 3.00  
- OUT ABOVE .25

2.75

#8 L.F. 10.36

DCPL TO HADDAN .50

#9 .60

#42 1.50

#22 3.00

18.71

#23 3.00

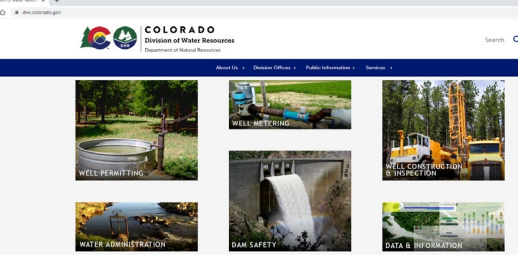
21.71

94

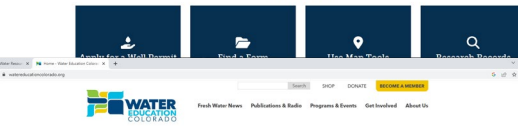








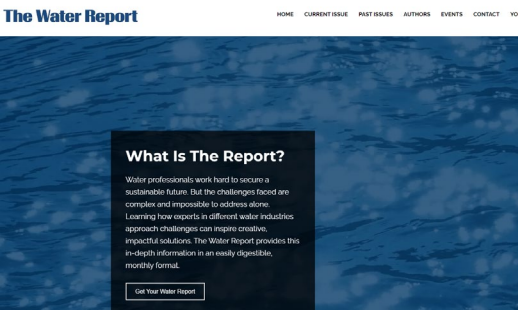
Division of Water Resources website at  
[dwr.colorado.gov](http://dwr.colorado.gov)



Water Education Colorado website at  
[watereducationcolorado.org](http://watereducationcolorado.org)



CSU Colorado Water Center website at  
[watercenter.colostate.edu](http://watercenter.colostate.edu)



The Water Report website at  
[www.thewaterreport.com](http://www.thewaterreport.com)